

Cast iron candle holders paper 1: very collectible! (Updated May 2021.)
Because of the updates: don't forget to look regularly on www.20century.eu for the latest news.

Collecting cast iron has been for about 40 years my passion. I started with objects dating from the 19th century, but suddenly I found beautiful designs from the 20th century, with many highlights after WW2.

Because of the wide range of models, holders by Dansk Designs and Lenox have become my favorites. Dansk Designs started when Jens Quistgaard from Denmark started to design in Copenhagen: he was invited to live in New York by Ted Nierenberg after he met him in 1950 in Denmark. In 1954 Jens designed the first flatware/cutlery Fjord. In 1961 Dansk started the line "Design With Light": a large range of candle holders came into production. They were made of glass, electroplated zinc, brass, wood, stoneware and....cast iron.

Documented in the cast iron series now, is a range of 51 items of which 48 by Jens Quistgaard, initials JHQ or IHQ and 3 by Börje Rajalin from Finland, initials IBR. The candle holders from the Svendborg Foundry in Denmark do have a finish in rough, sandy, dark grey enamel, like Flamestone, the later items from Japan, Taiwan and India are finished with black spray paint.

The first 6 models, unmarked (paper label), marked DENMARK or DENMARK JHQ or DANSK DESIGNS DENMARK J(I)HQ were the styles: clover leaf, taarn or half shell, S-shaped, candle tree, saucer spray and triangle 1. Advertised September 1961!



1412 Clover leaf.



1414 Taarn or half shell.



1416 S-shaped

In the New Yorker of November 4 1961 you will find the first ad with a large group of clover leaf holders and red tapers. And in 1962 the Clover Leaf was patented. If you find these three styles with brass inserts for the candles, you have the oldest items in your hands. Without the insert, they are # 1712, 1714 and 1716. The first were not marked in the iron but with a simple white label ! After some pages some discoveries about the oldest type of clover leaves!



The paper label, almost gone!!

Find the mark in the inserts “DANSK DESIGNS DENMARK IHQ ©” and the duck mark on the box! The duck mark dates from 1954. (The style# on the box of 2 Clover Leafs: 1412!)

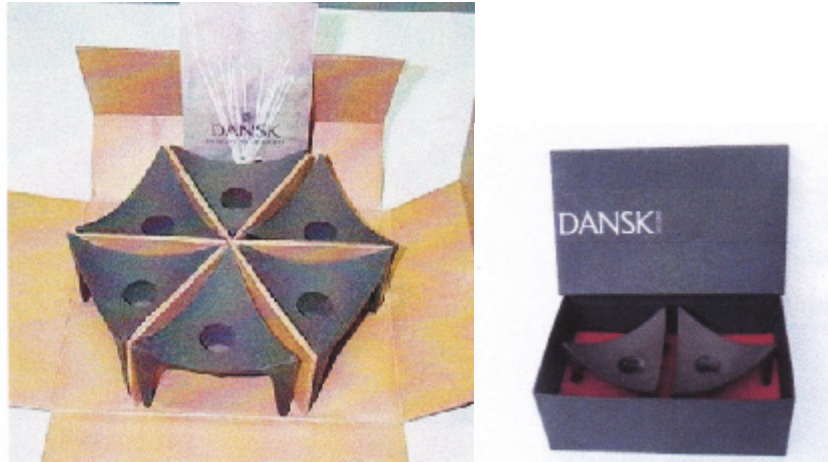
And: you can find these 3 styles in shiny, coloured enamel. Colours are orange, curry and green to fit the Kobenstyle and Orecast ranges at that time. The style#’s are probably changed. Not found till now. An overview of the candle holders in enamelled colours on page 4. Marked DENMARK only.



The next three older styles are:



1419, Candle tree 1421 Saucer spray. 1426 Triangle 1.
All of these seen with enamelled colour. Style# unknown!



The Triangle I was first sold as a set of 6, later on as a set of 2 with the style# 1492, found in catalog of 1964. The boxes known only with the company name Dansk Designs. The folder included in the set of 6 has the Duck mark.

The triangle of Jens was designed earlier: in 1957 he designed tableware in the Relief pattern for Bing and Gröndahl, with this ceramic candle holder pair.



Candle holders like the Triange in Relief Pattern. Available in 2 sizes.

In 2011, Lenox introduced a set of anodized aluminum Triangles, smaller in size, made in India.

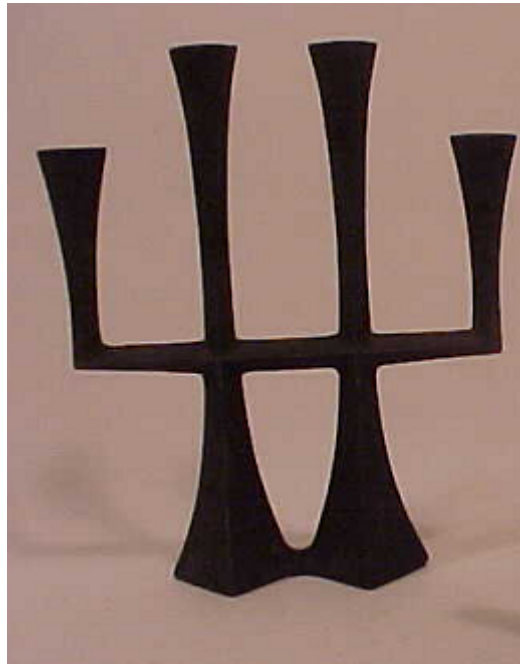


The set of 6 Triangles in bronze, Style# 831222.
 Issued for the 50th anniversary of “Design with Light” in 2011?.
 Or the retiring of this model? Now I know: patent was ended.

The overview of enamelled colours on different candle holders, one style# found.

Style# 1	Style# 2	orange	green	curry	black	grey	white	brown	blue	red
Clover 1412		X	X	X						
Taarn 1414		X	X	X		X				
S-shape 1416		X	X	X			X			
Tree 1419			X							X
Saucer 1421			X							
Tiny t 1424			X		X		X		X	X
Triangle 1426		X	X	X					X	
Fiësta 1702								X		
Fanfare 1704			X							
Star 1706	1601	X	X	X			X		X	
Lotus 1721					X					
Crown 1739			X					X	X	
Hurr II 1764			X							

There is still a question left: the candle holder below with the name "candelabra", is found with the marking Denmark and Denmark JHQ. Probably designed in 1962 or earlier and found too unstable?? Till now not found in his box, in catalogs or retail sale pamphlets.



No style#, "Candelabra".
Size 5-1/2" X 1-1/2" X 6-1/4"-H

Also there are questions about the pictured Clover Leaf I found on eBay.com with room for the insert but Martin shows this picture with the inserts and the box with the duck- and ducklings mark with style# 1412.



Clover Leaf in the style of the



Candle Tree holders.

Who knows more about this special Clover Leaf? Has the same finish. And found by Christa and Ib is a pair of holders that is similar to these Clover Leafs, but one has cylindrical holders on each leaf after it was put upside down!. The second one has different spokes from the centre to the holders:



Cylindrical holders on the "Clover Leaf" and one like the EPZ holder by Nagel for 3 candles.

In a Danish exhibition of Jens Quistgaard's work this candle holder was shown. In June 2017 a second one was found by Christa and Ib, now in these papers with a fantasy name and without the style#. Looks like a combination of various elements.



No style#. "Cone on dish on pedestal". Pré- Taarn?

And there is more to explore: found are some styles, designed for ½ inch candles first and later found in a smaller version for ¼ inch candles!



Number 1: Trellis, style# 1738 for the large one and for the smaller one?



Number 2: Hexagonal, style# 1714 for the large one and for the smaller one?

The first Tiny Taper candle holder or Spider (in Germany Eisstern) was designed in 1963 to hold 12x 15" or 20" long pencil candles with a diameter of ¼ inch. They had to be invented first. But Jens succeeded and still now it is a big succes: no dripping and bending candles! This first tiny taper holder, sold in 1963, was unmarked and had the style #1424, to read on the box. This style# was changed later as #1724 and as #01724 for the Japan and Taiwan productions. In 2015 Lenox introduced the Starcluster for 6 candles, style# 831225 and the Tiny Taper Holder for 6 candles! Style# 850411. Just 50 years after the introduction of them in 1963. Please see at the end of these papers: Dating by the boxes. Known are 9 different boxes, helpful in an attempt to date the items.



The original Tiny Taper Holder and



The Spider #850411 by Lenox for 6 tiny tapers In cast iron and enamelled aluminum
Issued for the 50th anniversary in 2013?.
Or the retiring of this model?

Jens later designed more cast iron holders (and 10 others of different materials) for these tiny taper candles. They were designed to hold 1, 6 or 12 candles. The style names for the cast iron holders are: the small triangle, bowl 3 inch and bowl 4.75 inch, fiësta, fire place 6 and fire place 12 candles, trivet, clover, festival, star cluster, fence, charmed circle and the high modular holder. The last one you will find on a later page.



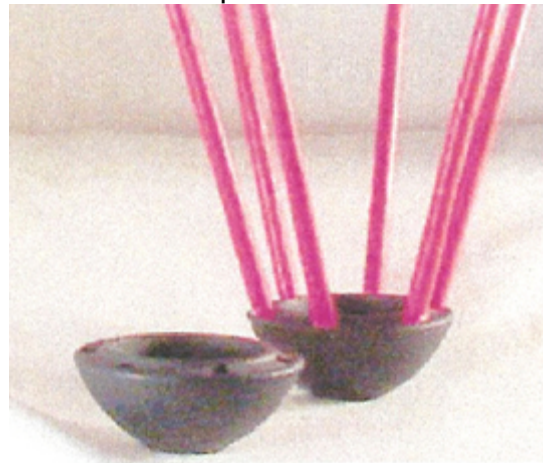
1726, Triangle 2



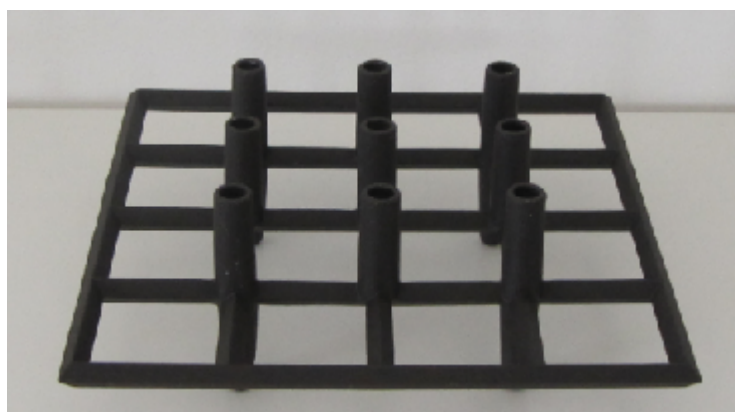
1702, Fiësta, 01718 with Taiwan box and black paint.



01715, Bowl 4¾"



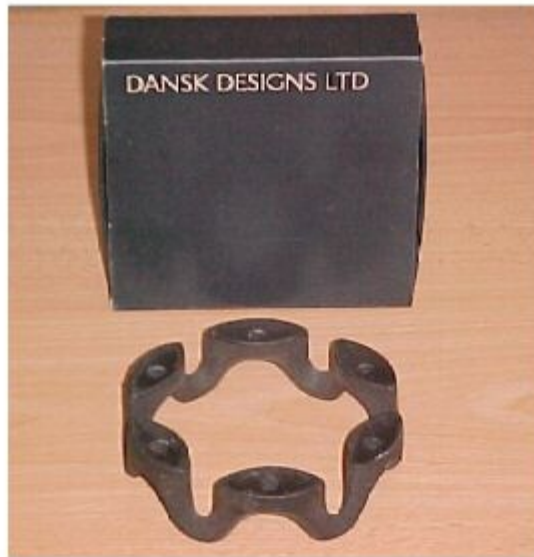
01713, Bowl 3",
both only found marked Taiwan.



1729, Trivet



1744, Fire place 12 candles



1743, Fireplace 6 candles.



1721, Clover or Flowerpetal.



1751, Festival.



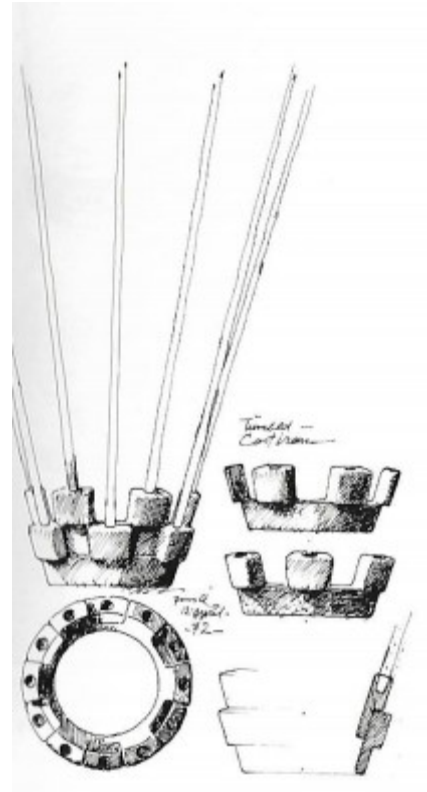
1706, Starcluster.



1601, Lilac, also available in other colours



In 2013, Lenox introduced a new Starcluster, #850412, holding 6 candles.
Made in India and offered in enameled alluminum and black cast iron! Issued for the
50th anniversary in that year of the Tiny Taper candles?,
Or the retiring of this model?



A new discovery in 2020: No style# and no name till now: so called "Cluster", a stackable pair of holders for $\frac{1}{4}$ " candles, width $4\frac{1}{2}$ ", together with the drawing by Jens Quistgaard in 1972, used in a Dansk Designs booklet of 1982.

But other designers used this succes too: I found 42 not-Dansk Designs cast iron candle holders for the same size of candles by Hallmark, Laurids Lonborg, Counterpoint, Nob Hill, Carol Candles, Wigmore, Preta, Carson Pirie Scott, Robert Welch and Sears Scandia. One of the Sears Scandia holds 24 candles! Paro made a lot of cast zinc candle holders for the thin tapers and Digsmed designed 3 different holders in teak wood with zinc.

The other designs by Dansk Designs were made for candles with diameters of 0.5", 0.75", 1", 1.5", 2" and special candles for models with spikes. They have a drilled hole in the bottom of the candle.

Styles for ½" and ¾" candles:



No style#, Arabesque, only found marked Taiwan. 1735, Iron Arch. (By IBR)



1740, Candlelite I (1741 = II, has a round base) and 1742, Candlelite III, (only found marked Dansk Designs International Japan, label,)



1762, Circlet. (By IBR)



1722, Charmed circle.



1739, Iron Crown.



1754, Domino.

In 2011, Lenox introduced the new Crown, holding 4 candles, in aluminum.



Crown in aluminum. holding 4 candles, Style# 831225.
Issued for the retiring of this model?

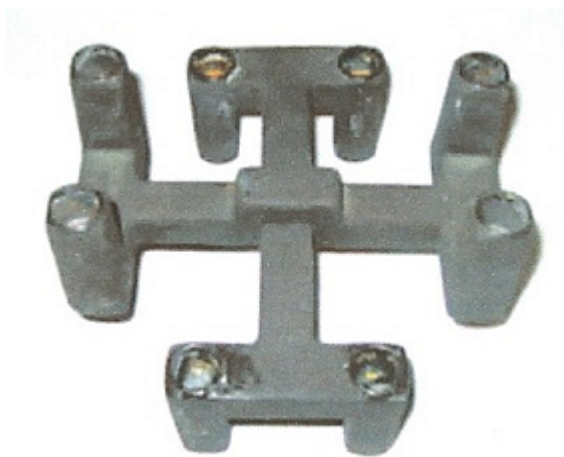


1700, Matador Lamp Hurricane. Found in two styles: the oldest one has a dimple in the center for a taper candle too and has the "Flamestone finish". Cast in Denmark. Without the dimple: only found marked with label Taiwan and spray painted black.





1717, hurricane for taper $\frac{3}{4}$ " only, with LTD or INT'L on the label.
This one till now found in spray painted only. In the iron you will find a number that relates to the mould number from the casting machine Disamatic.



Style# 1720, Turnabout, 2 separate, stackable pieces. Picture of the box with thanks to Iben Schjaer-Jacobsen..



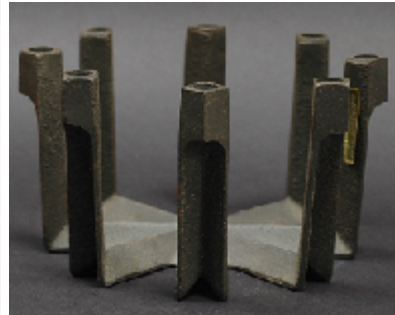
1612, Pineapple spike



1693, Pineapple candle holders
(thanks to Christa and Ib)



Style# 1745, Fire Holder-6 candles ¼" "



no style#, Fire Holder-8 candles ½".

And.....



no style#, Fire Holder-12 candles ¼".
A discovery in 2017 thanks to Christa, Ib and Dennis!



1763, Starburst spike.



1768, Reflections spike (by IBR), set of 4. Also found in clear glass, set of 2.



1413, Stemme



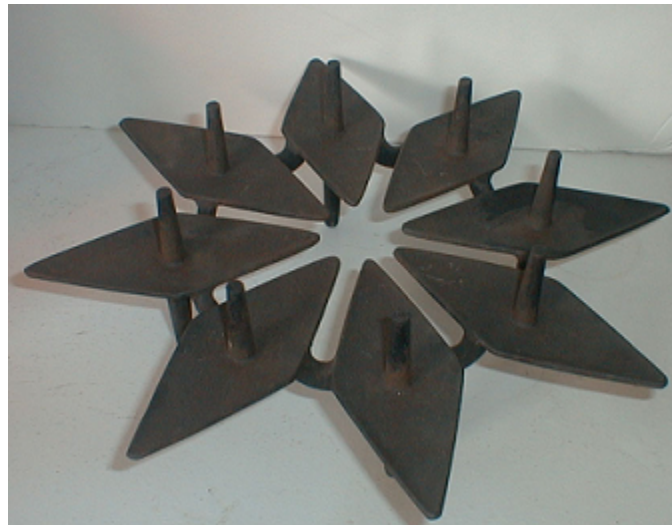
1715, Hurricane.



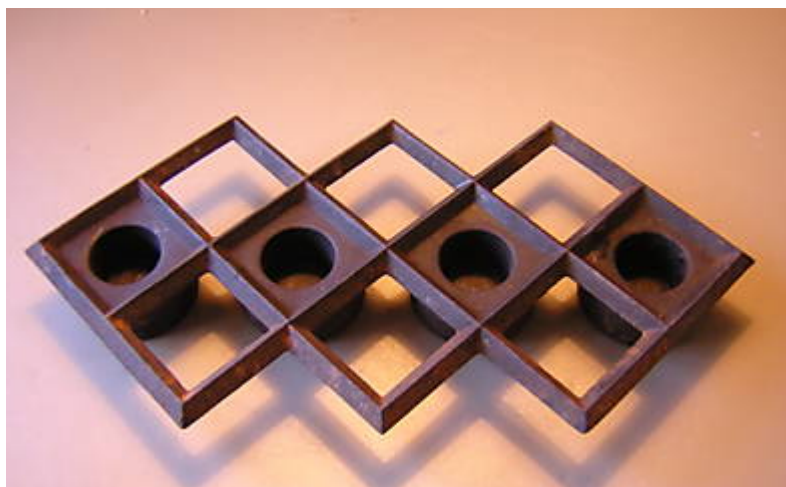
1752 3 Branched Spike.



1753 5 Branched Spike



1794, Wreath spike.



1704, Fanfare



1723, Tic Tac Toe.

The latest designs date from about 1976. There always can be a discovery of a till today unknown design, because in 2008 I found the first known Pineapple Spike candle holder and this high modular holder for $\frac{1}{4}$ inch candles, the holder is made in two parts with a bolt in the centre:



No style#, "High modular holder"



A second discovery, also no style# and no name till now, called
“Ceiling candle holder”, found in a booklet by IQ Designs Denmark by
www.iqdesigns.dk by the daughters of Jens Quistgaard and Jess Lausen of the
Svendborg Foundry in Denmark..

More on the next pages:

How to date the different styles?

By the boxes of candles and holders!

Dansk Designs: iron candle holders to date by the boxes!



Duck with ducklings mark on the box with 4 match box holders from 1954 till ±1962

In 1961 the line **Designs with Light** started = box 1



the first candle holders Clover Leaf with the duck with ducklings mark.
Together with the Taarn and S-Shape holders marked on brass inserts.
To date **1962-1963**. Patented in Austria in Sept. 1962.

In the same year the holders Candle Tree, Saucer Spray and Triangle were introduced.

DANSK DESIGNS (box 2)



Because of its popularity, the Tiny Taper holder can be found in different boxes! Design and first advertising Tiny Taper in **1963**. With the green label on the box as found with the other holders of **1962**.

DANSK DESIGNS (box 2) for the Tiny Taper



the same type as above, colour is black too. Holder **unmarked or marked**.
To date **1963**, (patented in Austria Oct. 1962) for Tiny Tapers **1964**.

DANSK DESIGNS (box 3)



The box is **black, red inside** and the style of printing is seen before on the adhesive tape and on the boxes with the candles

DANSK DESIGNS (box 4)



the new box with DANSK DESIGNS in line, colour is **black**. To date **1964**.
DANSK DESIGNS (box 5)



the same box, but the colour is **dark grey**, to date **1965**.
Note the space behind DESIGNS: wider on the black one.

DANSK DESIGNS LTD (box 6)
Without the style# on the box.

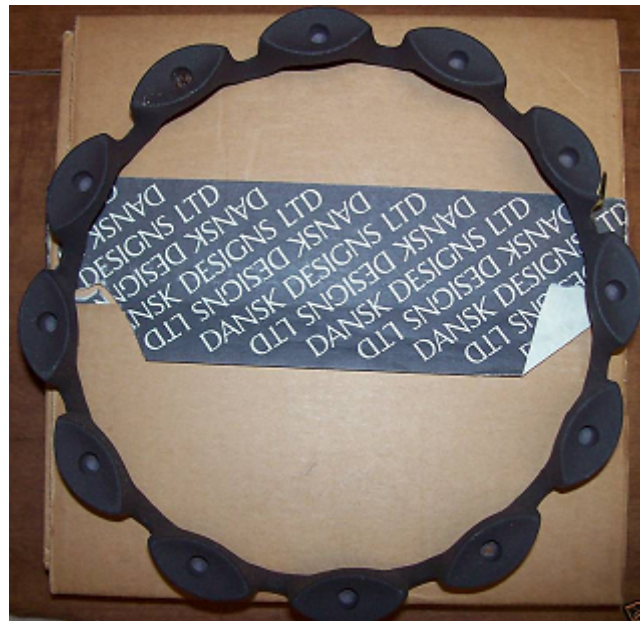


the **dark grey** box with **DANSK DESIGNS LTD**, to date **1965-1972**
The holder can also be found with the mark:
DANSK DESIGNS LTD DENMARK IHQ ©

DANSK DESIGNS LTD with style# on the drawer part. **(box 7)**



For larger items cardboard boxes were used with adhesive tape, text **DANSK DESIGNS LTD** diagonal. To date **1965-1972**.



Fireplace 12 candles Style#1744



Candle Tree style# 1719

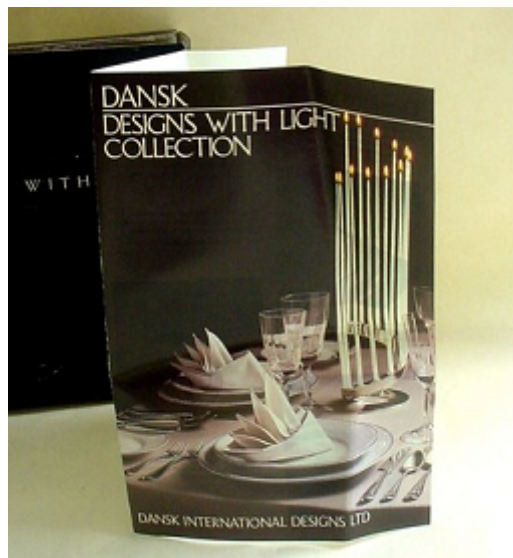
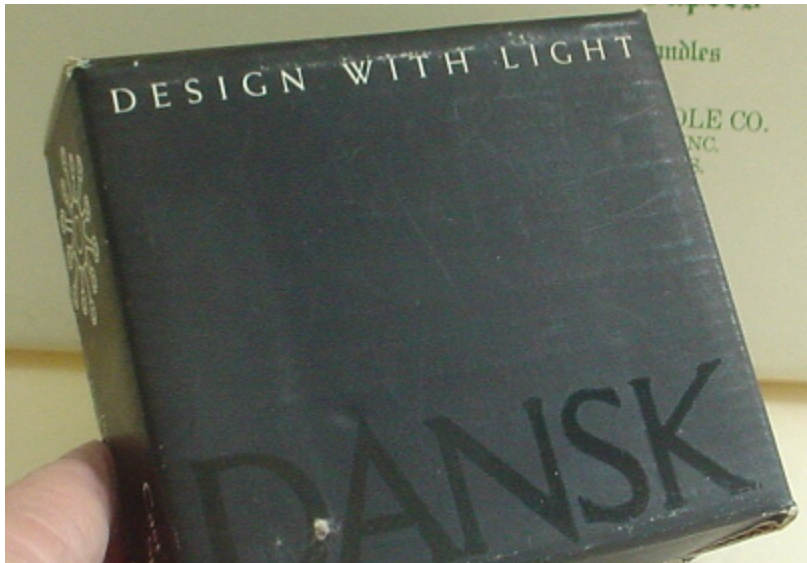
Sometimes adhesive labels were used on the candle holders. They are mostly lost!





DANSK INTERNATIONAL DESIGNS LTD (box 8).

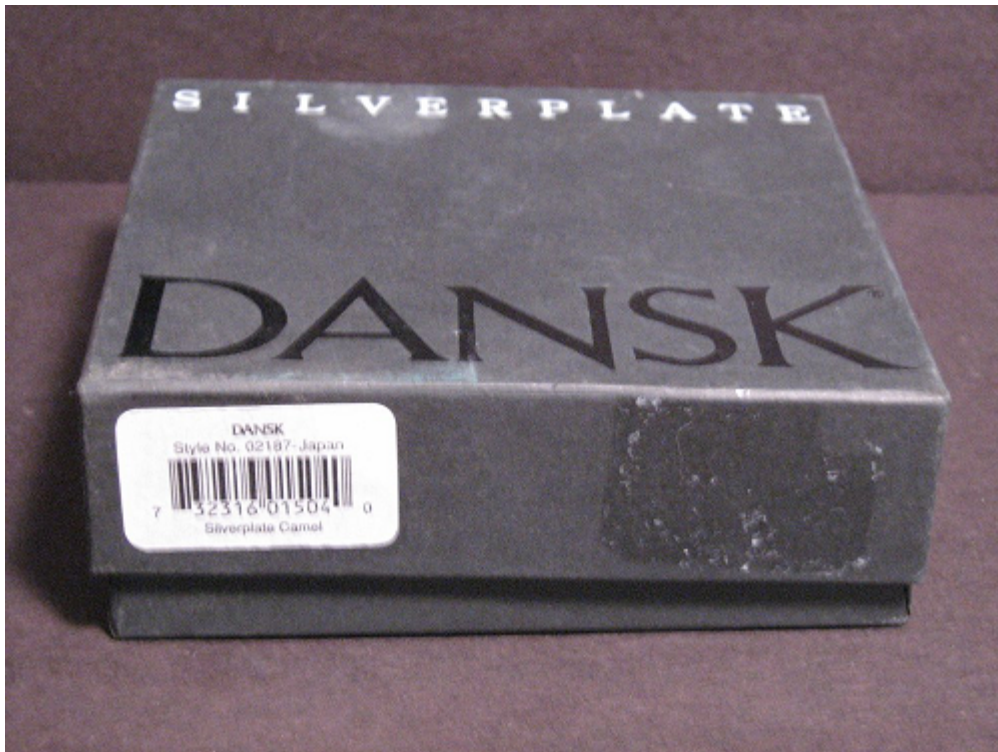
The **Japan** production. To date ca. **1990**?



The Tiny Taper, now called **Spider!**. With style# 01724.
Box is **black**, marked with DANSK INTERNATIONAL DESIGNS. To read on the
leaflet in the same box.

DANSK printed on box in shiny black.

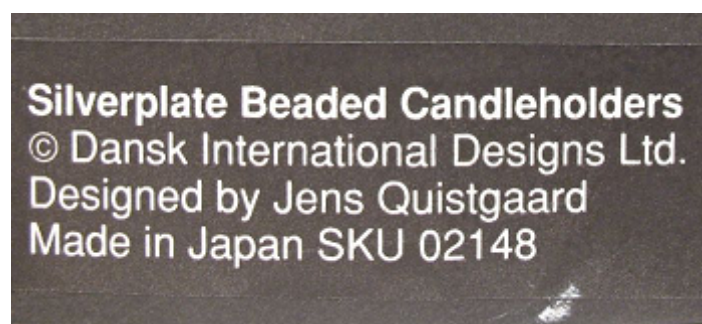
Other known in Japan produced styles are the Candellite I, II and III



The same type of box for the silverplated Camel and other paperweights, made in Japan.



Label on one of the cast iron Candlelite holders.

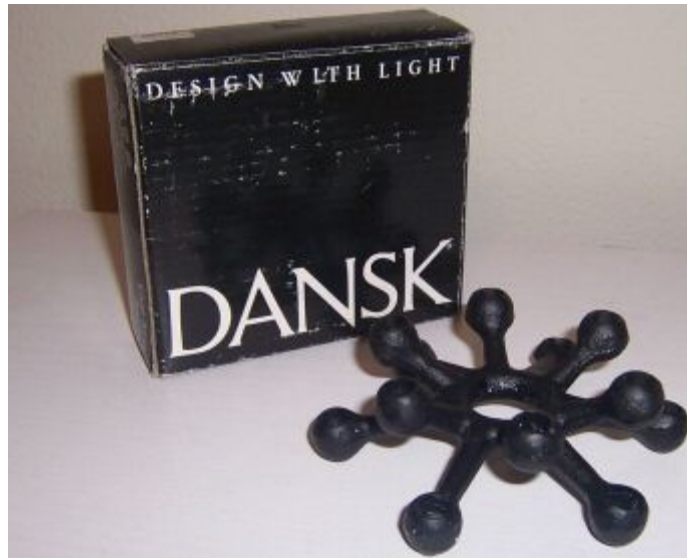


Note the adding of 0 to the style#! = **02148**.

DANSK INTERNATIONAL DESIGNS LTD (box 8)

The **Taiwan** production.

To date from **1996**.



The Tiny Taper is renamed **Spider** candle holder too, made in Taiwan. Taiwan also cast in the holder. Box is black, marked with DANSK INTERNATIONAL DESIGNS.

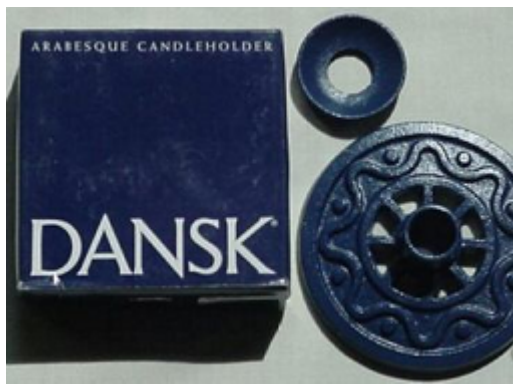
The box can be found in two types: DANSK normal or extra bold in white.

Note here the adding too of the 0 to the style#! 01724.

DANSK INTERNATIONAL DESIGNS LTD (box 9)



The box with printing DANSK in bold.



the Arabesque and Fiësta holders, made in Taiwan. Other Taiwan made styles are the later Matador Hurricane and the Bowls 3" and 4 $\frac{3}{4}$ ".

A pity, Jens Quistgaard (1919-2008) did not know all his designs in his last years. He moved back to Denmark to enjoy his old age there and perhaps to look back at a rich range of world famous designs!

The company Dansk Designs used different names, logo's and locations, usefull to date designs:

Dansk Designs, Great Neck, New York, formed July 28 1961. Jens draw the Duck-mark.

Dansk Designs with Light: first cast iron candle holders September 1961

Dansk Designs added LTD to their name in 1964

Dansk Designs LTD moved to Mt. Kisko, New York in \pm 1964

Dansk International Designs LTD, White Plains, New York \pm 1974

Dansk International Designs LTD was sold to new owners in 1985 (Goldman Sachs) and formed in the Dansk Acquisition Corporation.

Dansk was acquired by Brown-Forman Corporation in 1991 and brought under his Lenox subsidiary.

Lenox, including Dansk, was acquired by a group of investors in 2009 and renamed Lenox Corporation.

With thanks to www.20century.eu to place my article on their site! And you will find the ¼ inch and ½ inch candles for your Dansk candle holders here!
Thanks to Jess Lausen Denmark, David Streeter (†), USA, Bruno Gilles, the Netherlands, Christa and Ib Rune Jeppesen, Denmark, Dennis Petersen, Denmark and Martin Boeg, Denmark.



And to all the sellers on , they bring a lot of collectables and information to the collectors!

Rob Meijer, Beverwijk, the Netherlands.

Do you know more styles? Please, let me know! pahkiihe@hotmail.com

P.S. these notes found:

July 28, 1954 Dansk Designs, Inc. formed in Great Neck, New York

Between 1962 and 1964 Changed to Dansk Designs, Ltd.

Between 1964 and 1965 Moved to Mt. Kisco, New York

Between 1972 and 1974 Changed to Dansk International Designs, Ltd.

In 1984 Ted Nierenberg sells Dansk to new owners

Retrieved from "http://www.tpederzani.com/pepper/Dansk_Designs"